

4SSPC9/200-AD220/3KW

4inch Centrifugal Solar AC/DC Submersible Pumps

CHARACTERISTICS

DIAMETER	4 inch
DISCHARGE	1 inch
CAPACITY	3,000 W (4HP)
RATED VOLTAGE	220 V (150 ~ 350Vdc) / (85 ~ 280Vac)
RATED CURRENT	15 A
MAX. FLOW	9,000 L/HR
MAX. HEAD	200 Mtrs.
RATED FLOW	3,000L/HR
RATED HEAD	155 Mtrs.

PUMP INFORMATION

MOTOR	Permanent Magnet Synchronous Motor
OUTLET	304 Stainless Steel
PUMP BODY	304 Stainless Steel
IMPELLER	Reinforced Nylon
MOTOR BODY	201 Stainless Steel
SCREW	304 Stainless Steel
SHAFT	304 Stainless Steel
WINDING	Copper wire

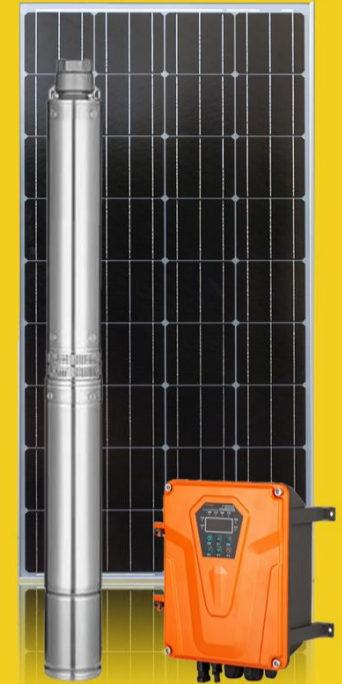
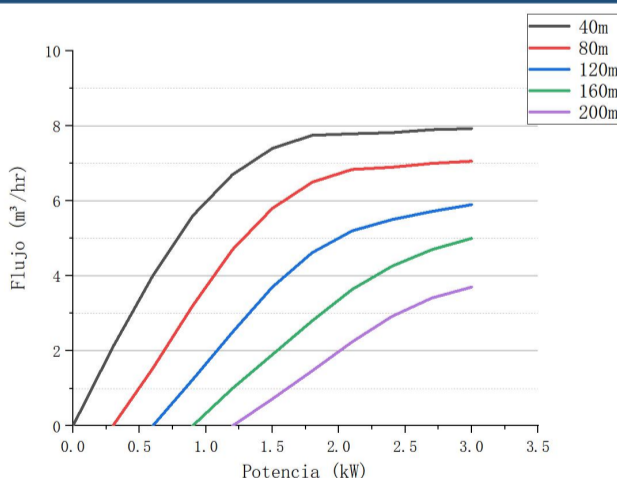
CONTROLLER INFORMATION

ENCLOSURE	Stretching Aluminum
IP GRADE	IP54
CONTROL MODE	32Bit MCU / FOC / Sine Wave Current / MPPT
COOLING MODE	Heat Dissipation By Fan

PROTECTION FUNCTIONS	Anti-Reverse Protection
	Phase loss
	Under-voltage
	Over-voltage
	Over-current
	Short circuit

OPERATING TEMPERATURE -15°C - +60°C (Suggest 0°C - +50°C)

PERFORMANCE

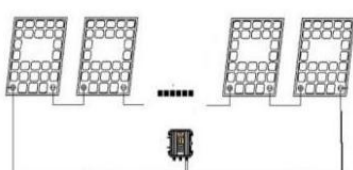


KEY FEATURES

- EC DRIVE PMSM, designed for solar with over 90% efficiency;
- Solar connects directly, without battery;
- 96%-99% MPPT maximise power use from PV modules;
- Fast return on investment, Free-maintaining;
- Strong ROI against diesel powered pumping reducing production costs and reducing carbon footprint;
- Fast and simple installation, direct replacement for an existing Submersible pump;
- Smart modular design for simple and cost effective servicing;
- High quality non corrodible materials used throughout, Cast stainless steel components;



SOLAR PANEL CONFIGURATION



UNIT PANEL VOLTAGE = 42 Vmp /51.7 Voc

UNIT PANEL POWER ≥ 550 W

PANEL QUANTITY = 8 PCS IN SERIES